

RIPE NCC Update

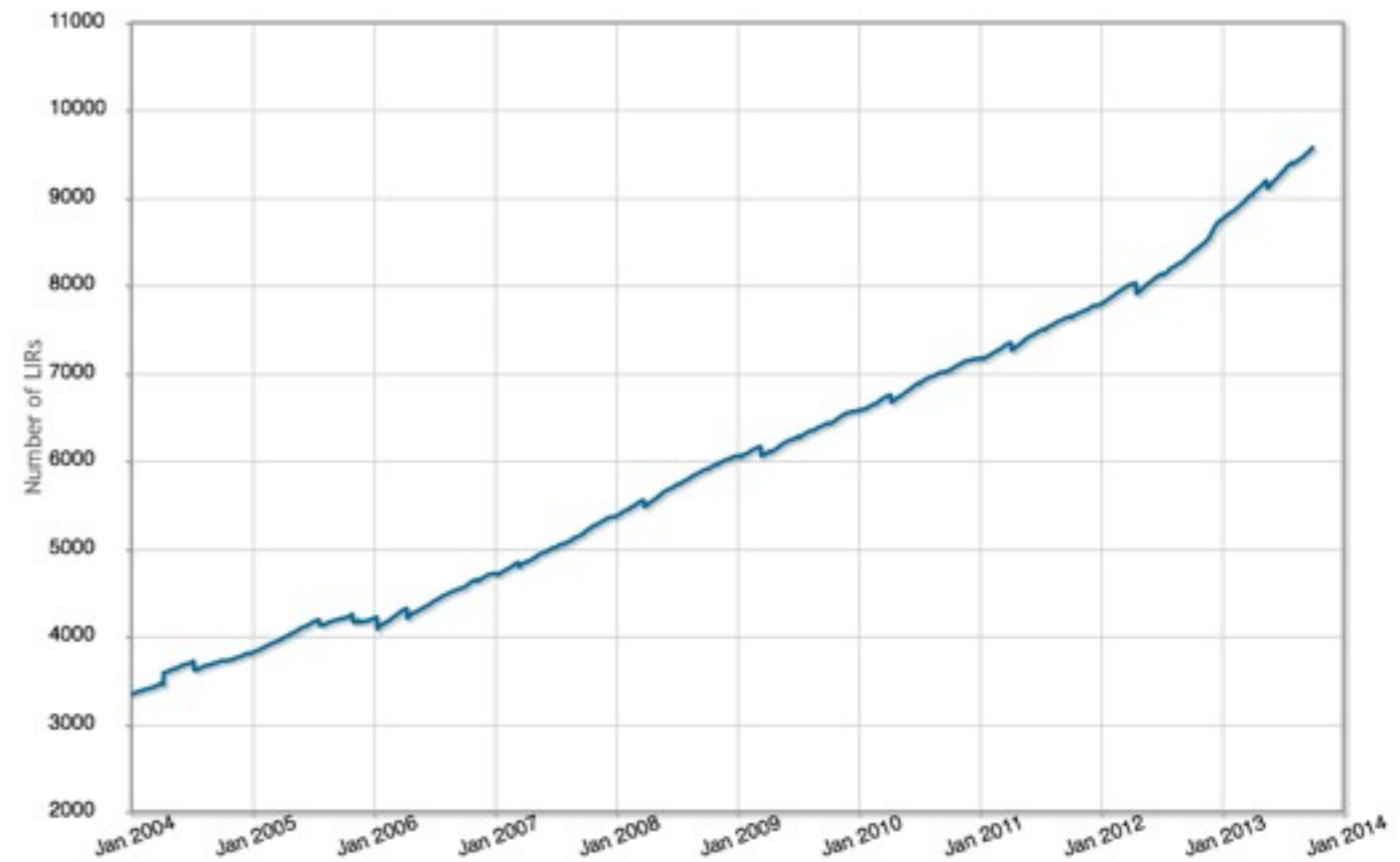
ARIN 32

Andrew de la Haye
COO
RIPE NCC



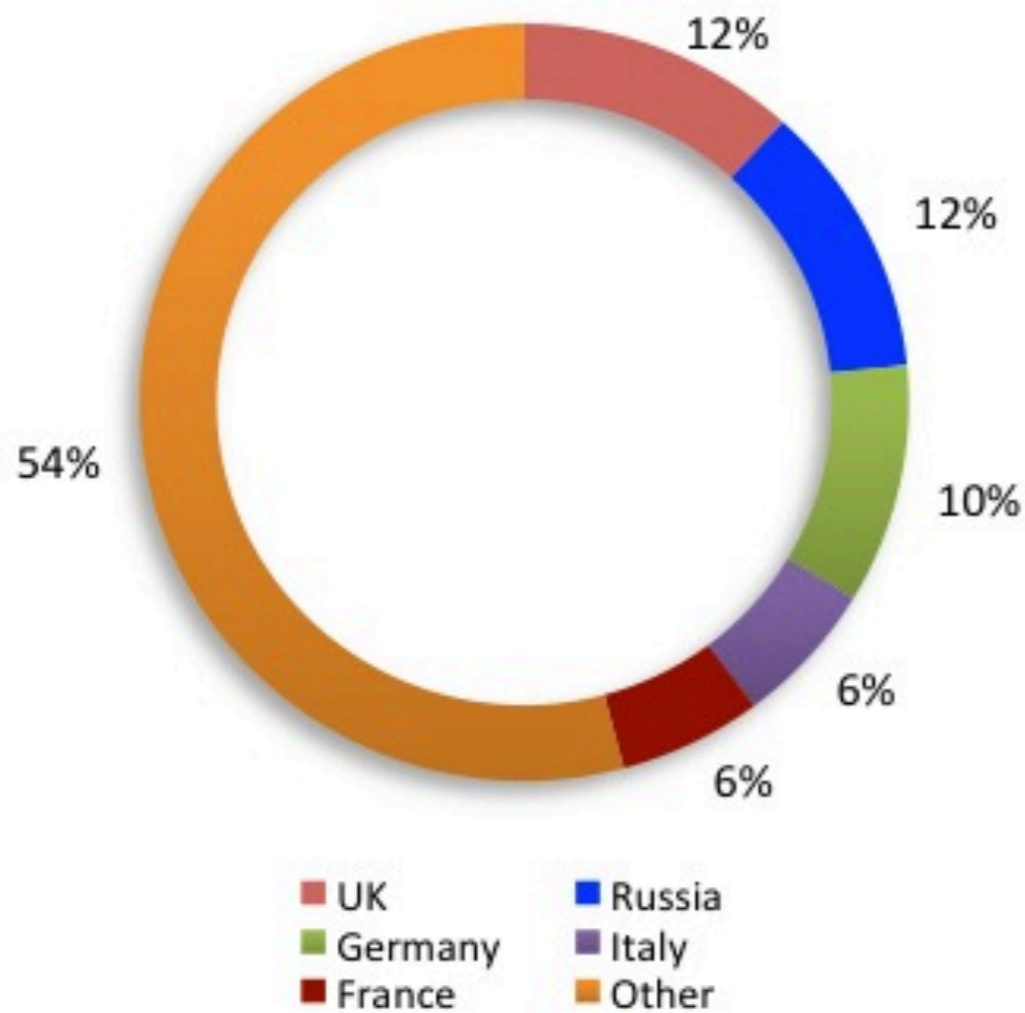
9,577 RIPE NCC Members from 76 Countries

- Steady growth
- Increased diversity
- All members must feel included
- Preserve open bottom-up, self-regulation
- Promote the RIPE Policy Development Process
- Challenge: keeping all members engaged with PDP

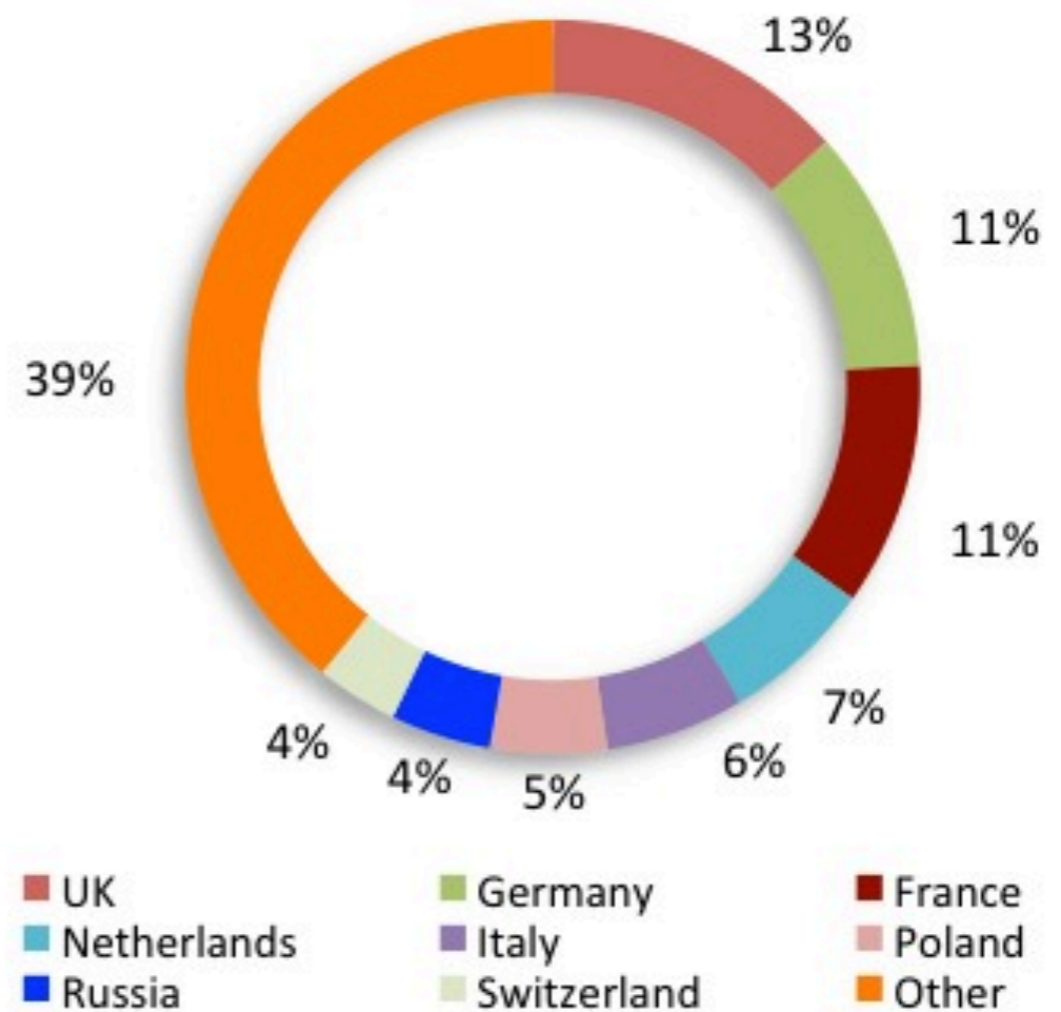


RIPE NCC Membership 2013

Total Membership by Country



New Membership by Country



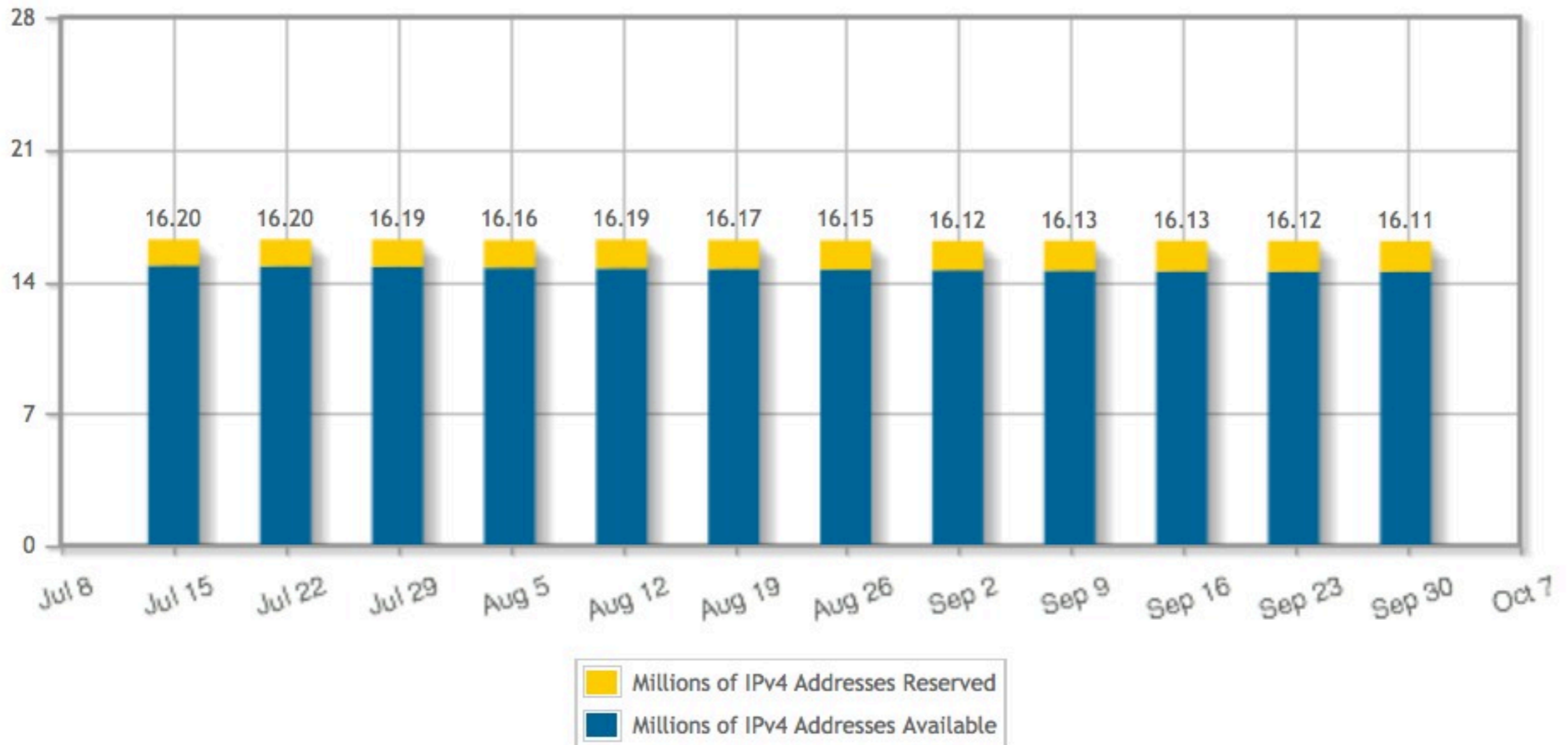
Adapting to Members' Needs

- A range of new players
 - Who may have less time to interact with the RIPE NCC
- Evolving industry landscape
 - Increased membership engagement is necessary to understand these evolving needs
- We are adapting our services
 - New ways of communicating and interacting with our membership
 - Increased regional presence

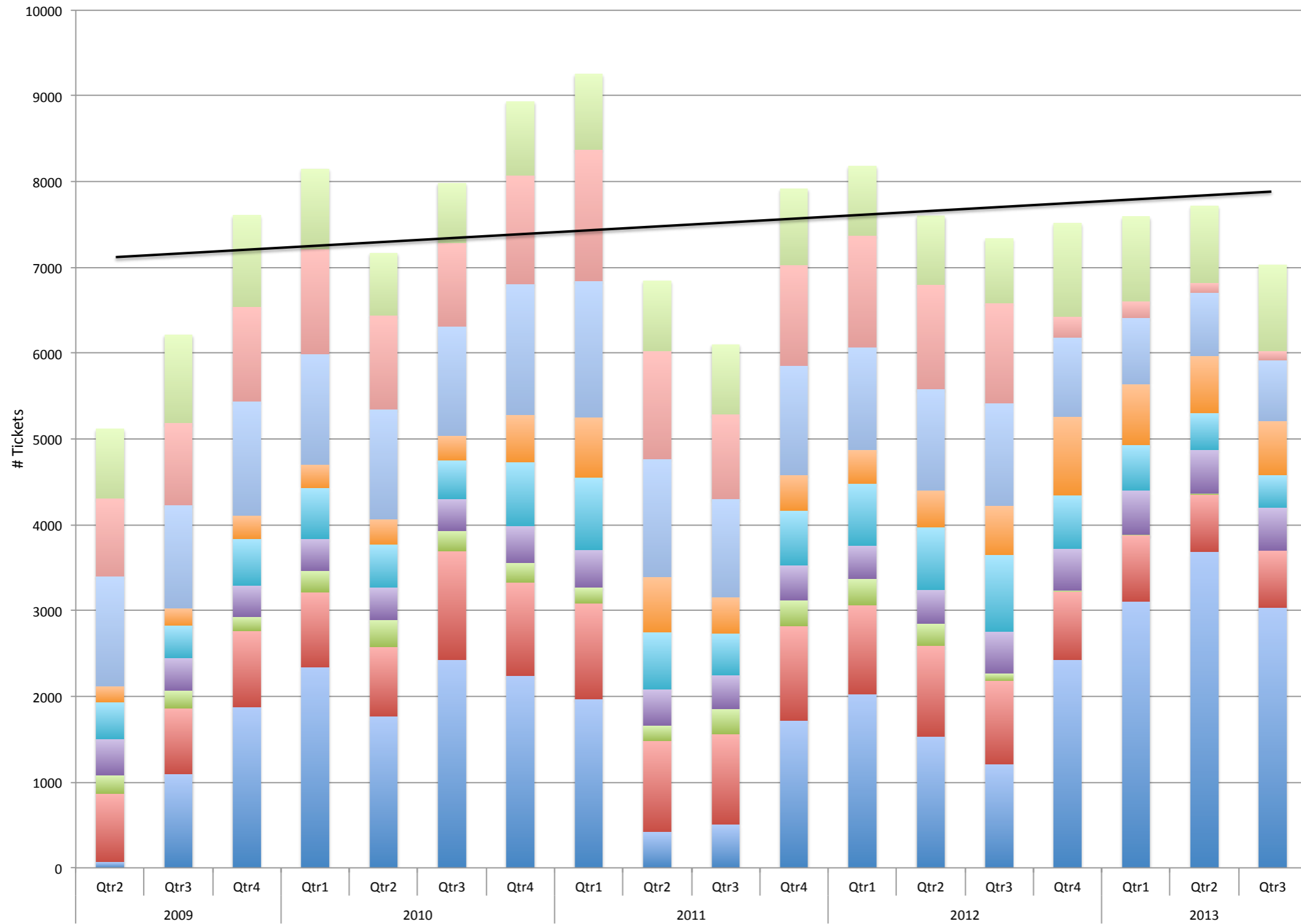
IPv4 Status

- IPv4 depletion event: 14 September 2012
 - Orderly run-out, currently applying RIPE last /8 policy

RIPE NCC IPv4 Pool – Last 12 Weeks

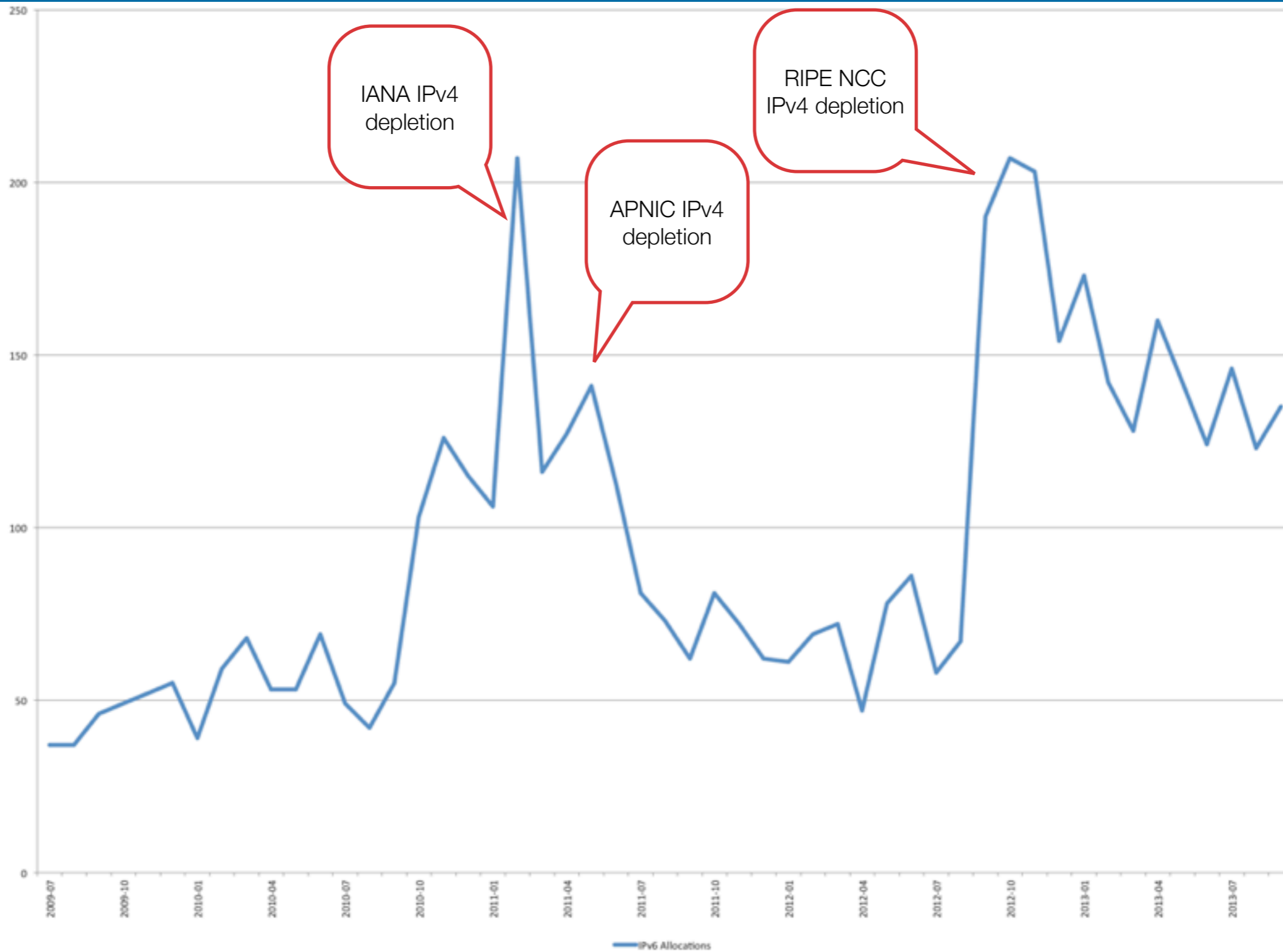


Registration Services ticket volume



2007-01 AS Number Audit IPv4 1st Alloc IPv4 Add Alloc IPv6 PA Request PI Request Registry Issues

IPv6 Allocation

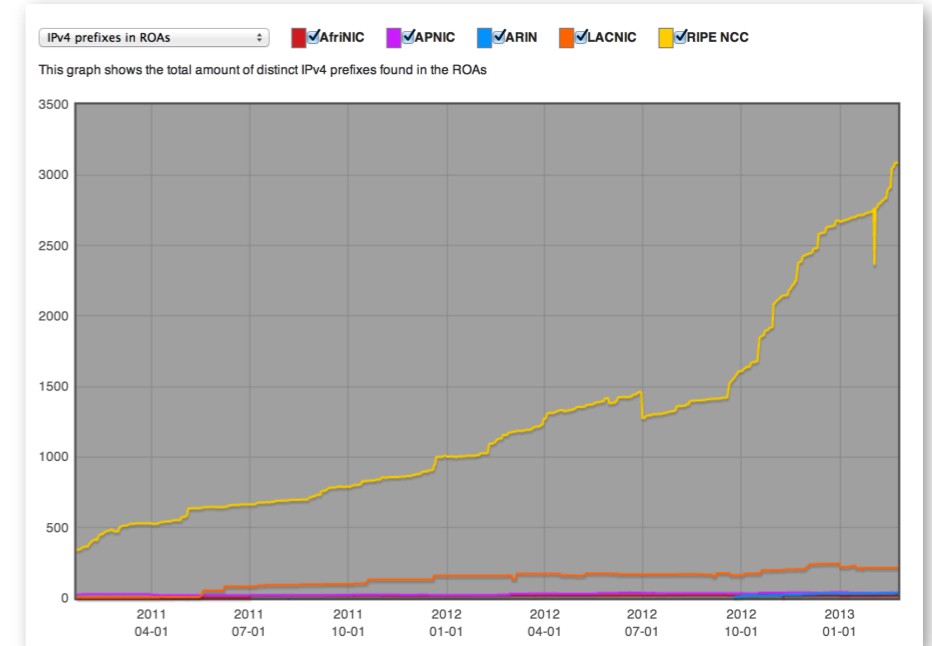


Assisted Registry Check

- The existing Audit procedure is seen as ‘cumbersome’ and time consuming for the LIR
- In order to maintain a strong registry and align with the members feedback, we are evolving our services
- Assisted Registry Check
 - Maintain the periodic contact moments between LIRs and the RIPE NCC
 - Reduce workload for LIRs
 - RIPE NCC provides a report highlighting our observations and recommendations
 - Overview of registered information (e.g. contact details)
 - Overview of Internet Number Resource consistency (e.g. overlapping assignments)
 - Overview of rDNS and route-objects consistency (e.g. check lame reverse delegations and routing registry vs BGP announcements)
 - Assist LIRs with improving the data accuracy

RPKI

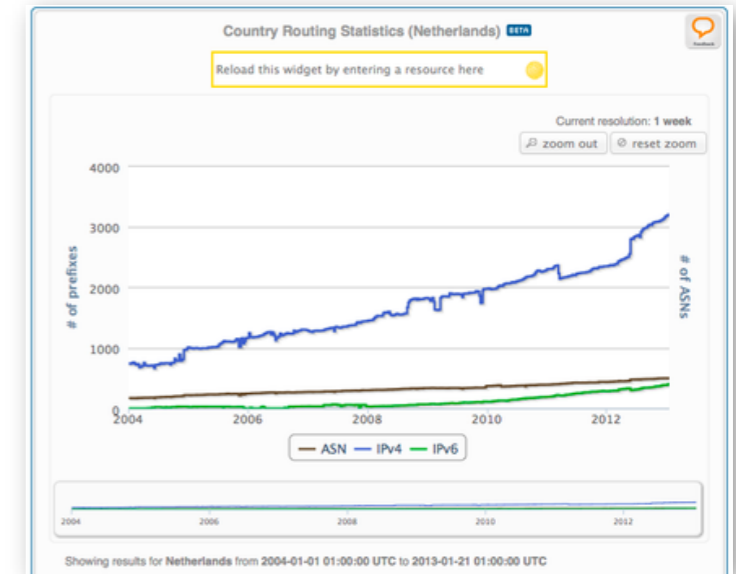
- Continued development
- ... and deployment
- “Webinar” online at...
<http://meet95212513.adobeconnect.com/p6jrgwe2qw4/>
- Policy issues
 - Legacy address certification
 - Provider independent certification



RIPE Labs – Recent Highlights

- Statistics per Country

<https://labs.ripe.net/Members/cteusche/country-specific-graphs-in-ripestat>



- RIPE Atlas Update

https://labs.ripe.net/Members/suzanne_taylor_muzzin/ripe-atlas-april-2013-update

- RIPE NCC Roadmap

<https://labs.ripe.net/Members/mirjam/introducing-ripe-ncc-roadmap>



More services being implemented

- IP Analyser
 - Supporting members' address admin
- RIPE Stat
 - Number resource info aggregated from many sources
 - Try it... <https://stat.ripe.net/193.0.6.139>
- Database Software rewritten (open source on Github), implemented WEIRDSD RDAP protocol, easy to set-up and run own instance
- RIPE Atlas new probes & anchor pilot

The Year to Come

- Very positive Membership Survey, actions being formulated
 - Increased registry accuracy
 - Measurements
 - Internet Governance
 - Regional outreach / presence
 - Replacing and improving internal systems
 - Increase transparency / engagement for all of our activities and services

Questions?

