



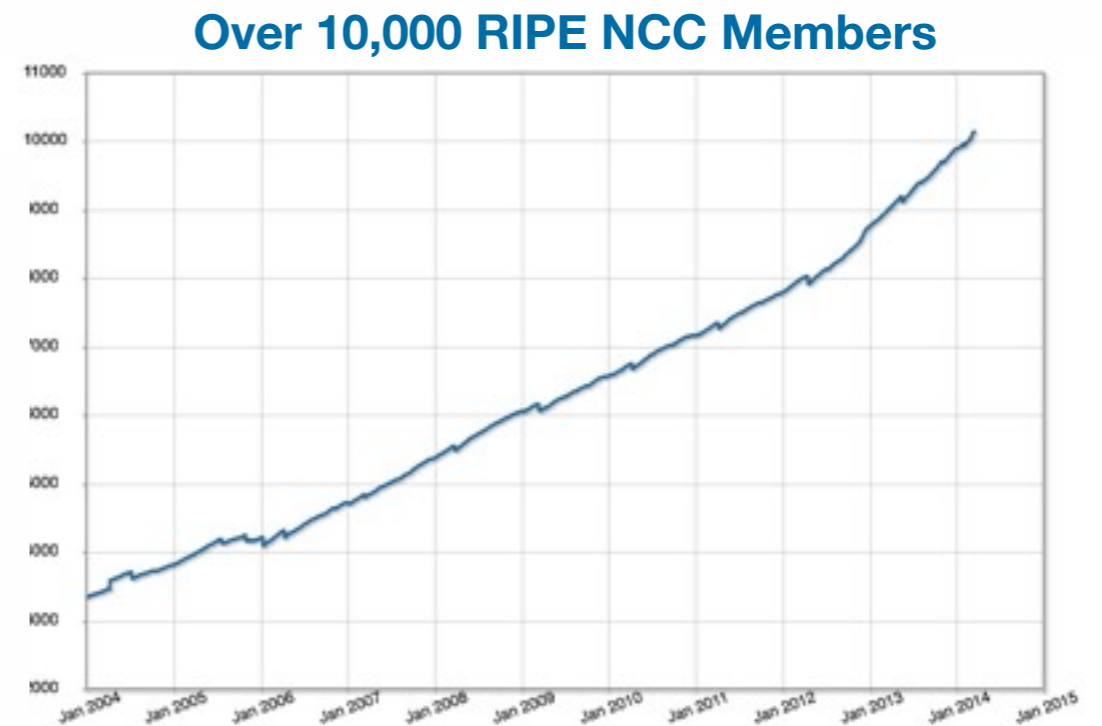
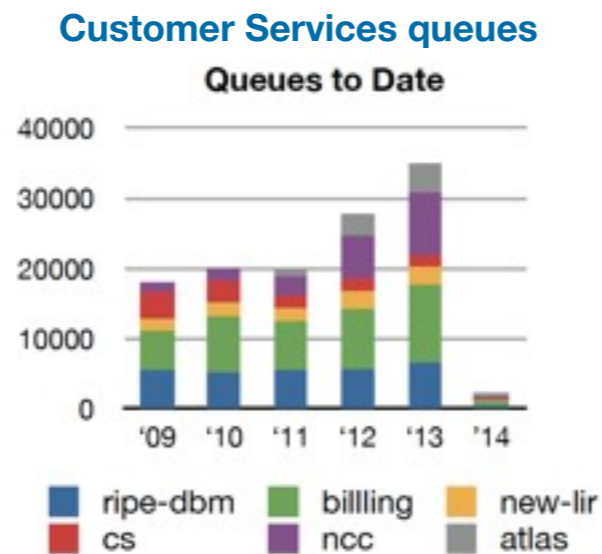
**RIPE  
NCC**

## **RIPE NCC Update**

---

Andrew de la Haye  
COO

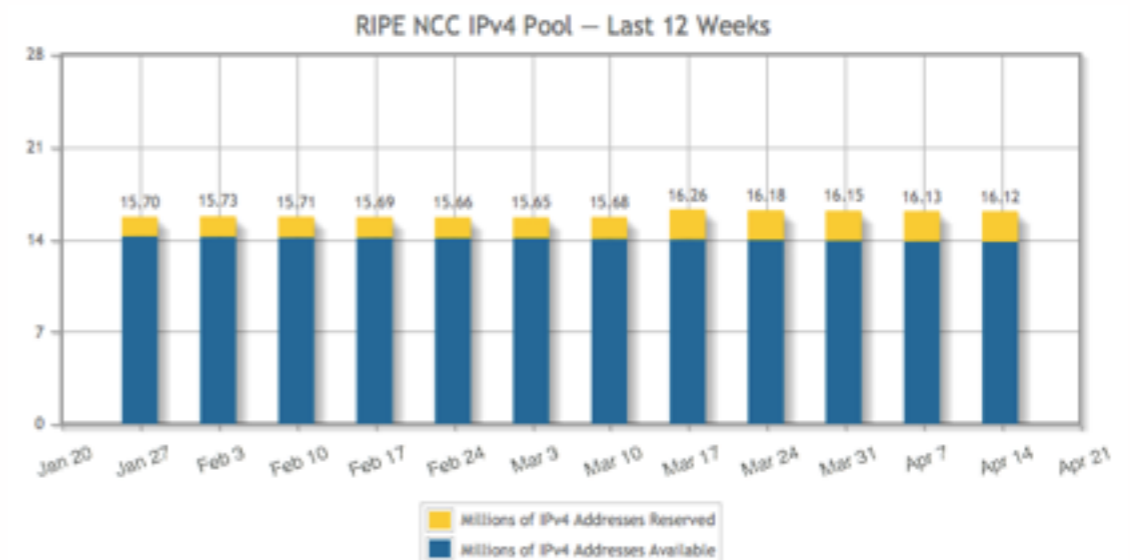
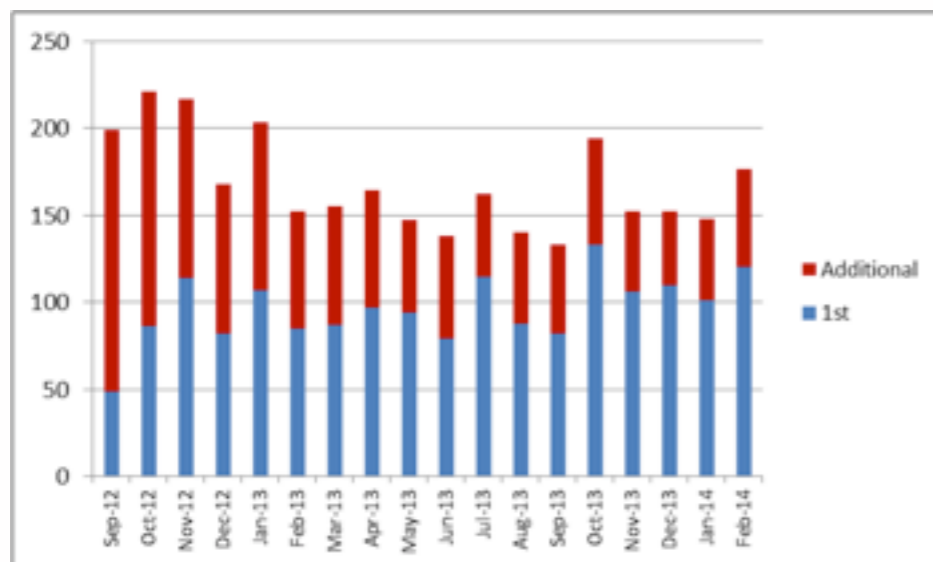
- More organisations becoming a member
- Expanding regional presence
- IPv4 transfers increasing
- IPv6 gaining momentum
- Improving contact methods and RIPE website
- Increasing complexity



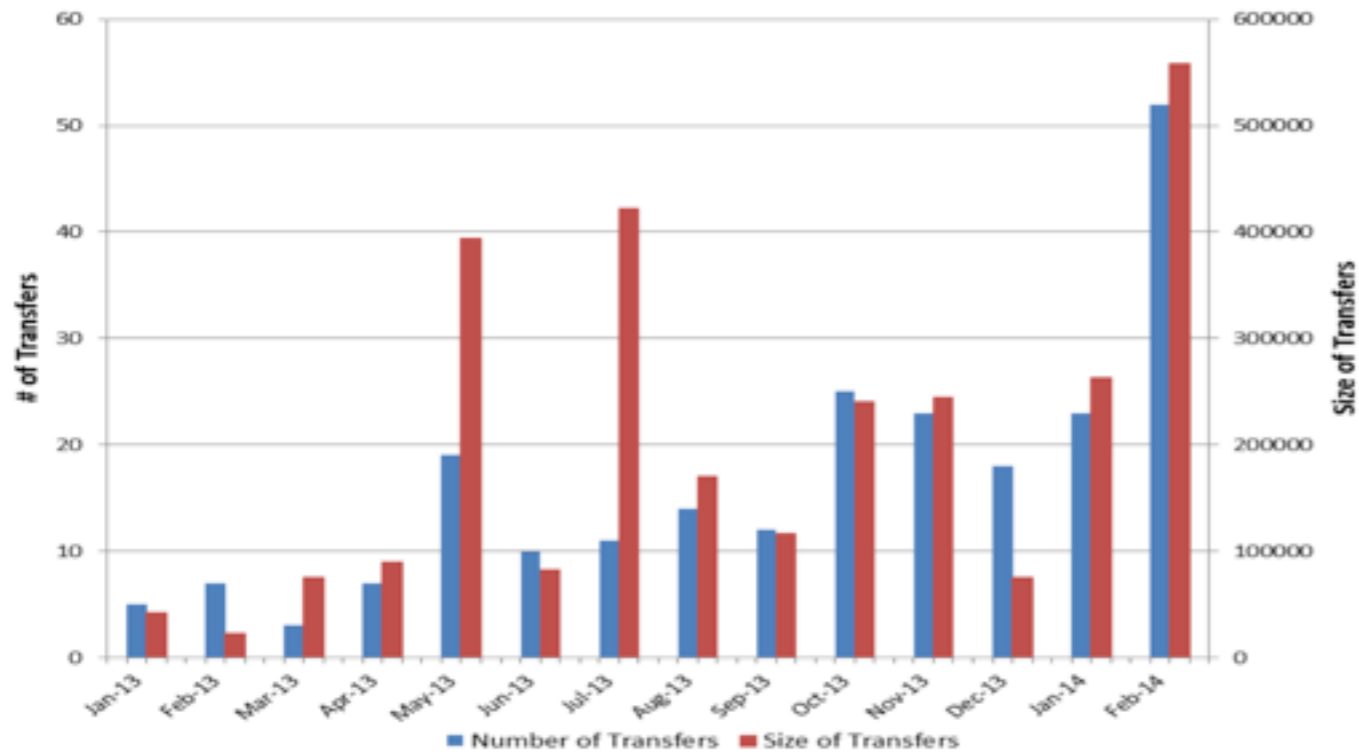
Source: <https://labs.ripe.net/statistics>

- Established a Dubai office in 2011
- Time has come to expand our presence
- Hired two Arab speaking employees to work from Dubai
- Opened an office in Media City
  - Better contact with the Arab community
  - Operations remain in Amsterdam

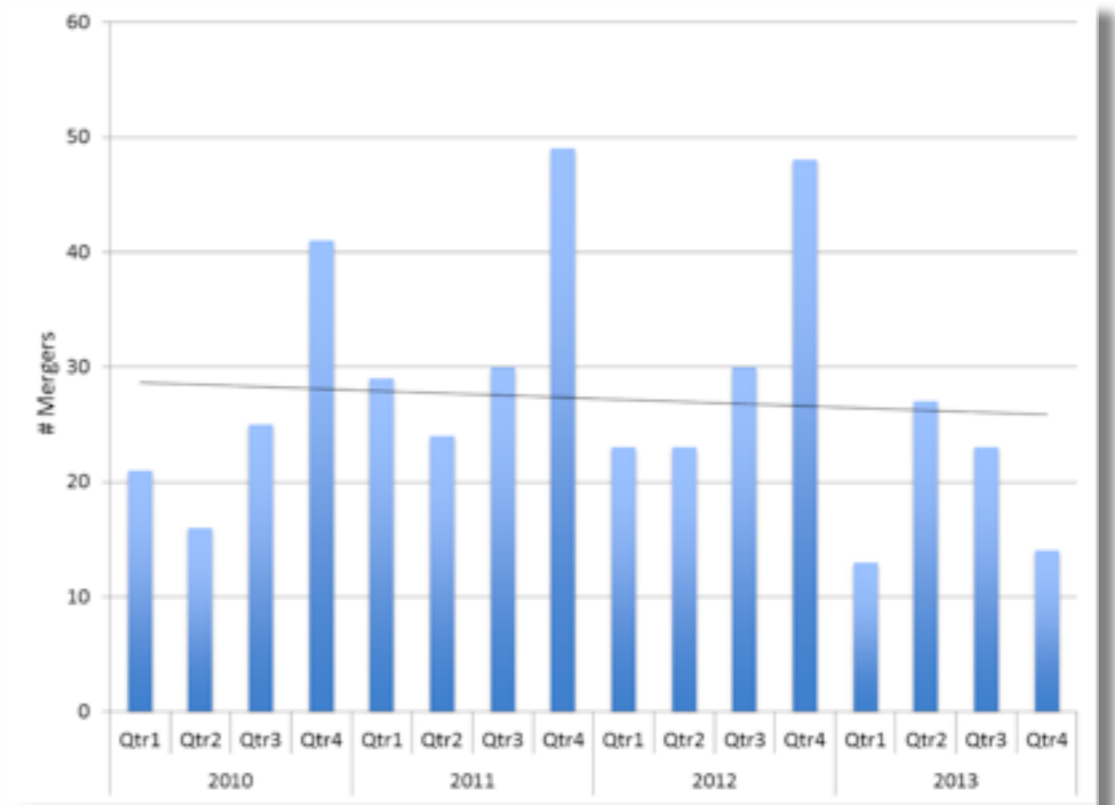
- We still have IPv4 addresses left
  - Every member can get 1,024 addresses (/22)
  - Block reserved for Internet Exchange Points
- Number of transfers increasing
- “Post depletion adjustments” policy changes reduce bureaucracy
  - Less paperwork to prove you need addresses

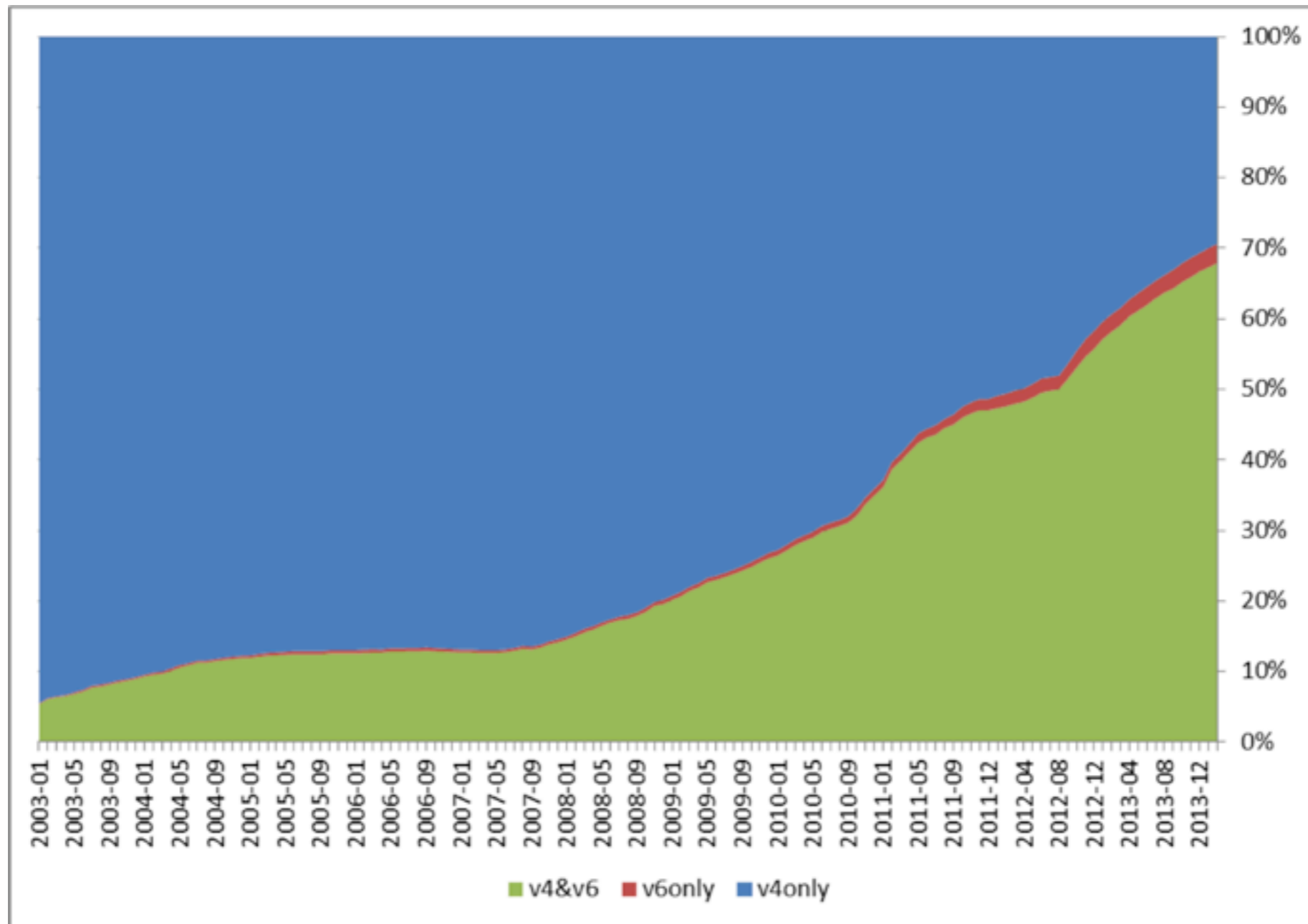


### IPv4 Transfers under Transfer Policy



### Mergers & Acquisitions





- IPv4 addresses are becoming more valuable
- Hijackers try very sophisticated methods to obtain control over (apparently) unused address blocks
  - Faking registration and identity papers
  - Faking entire websites and domains
- RIPE NCC has to do more thorough checks
  - Finding the right balance between due diligence and being overly bureaucratic

- Hijacks often target address blocks with outdated contact details
- Make sure contact persons and company details are up-to-date
  - Check the LIR Portal and update contacts
  - Verify all entries in RIPE Database are correct
  - Process any changes right away
- Certify resources



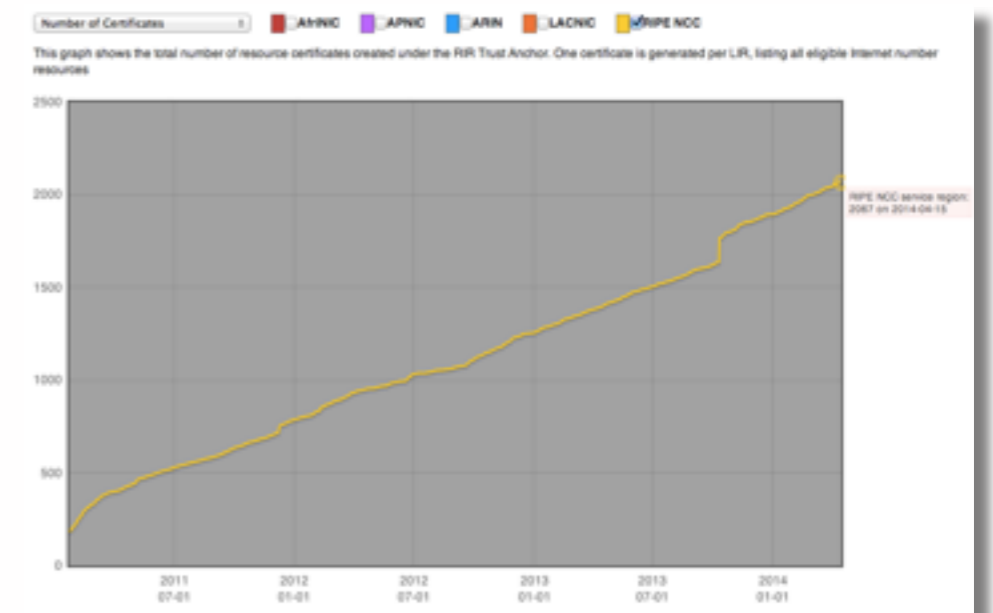
- Need for current and accurate registry
- Previous audit activities considered “time-consuming and disruptive” by members
  - Provide a more efficient, less time-consuming experience for the member



[https://labs.ripe.net/Members/matt\\_parker/assisted-registry-check-first-results](https://labs.ripe.net/Members/matt_parker/assisted-registry-check-first-results)

- 2000 Members have requested a certificate (20%)
- Averaging between 2 and 3 new CAs every day
- Members created ROAs covering:
  - 1500 unique ASNs
  - 6400 IPv4 prefixes; more than six /8s of address space
  - 1000 IPv6 prefixes; more than 10,000 /32 blocks
- Functionality progress
  - All address space (PI and Legacy)
  - RPKI software open source standalone package
  - Resiliency improvements

<http://certification-stats.ripe.net>



- Main theme: Registry quality & reduce bureaucracy
- 2014-01 “Abandoning the Minimum Allocation Size for IPv4”
  - Removes minimum allocation size for allocations held by LIRs
- 2014-02 “Allow PI Transfers”
  - Align transfer policy for PI addresses with transfer policy for PA addresses
  - Incentivise PI holders to maintain accurate registry data

- Government Roundtables
- Law Enforcement Agencies
- Main Focus remains the IGF
  - incl Regional Events like EuroDIG, Arab IGF, Russian IGF etc
- NETMundial
- ...

- Conducted Member Survey and defined 50 action items for 2014
- Investigating supporting more languages
  - Provide translations of key documents and information
- More contact with membership
  - Small scale events such as dinners and lunch meetings
- Advancing capacity building
  - Introducing technical hands-on IPv6 training
  - Improving E-learning platform and courses
  - IPv6 Roadshow material rewritten
- Collecting input on website improvements



- RIPE 68, Warsaw, 12 - 16 May



- Including “Change of the Guard”
  - RIPE Chairman Rob Blokzijl to step down
  - Hans Petter Holen will take over

